

ROTHENBERGER

SUPERTRONIC 2-3-4 SE

SUPERTRONIC 2-3-4 SE



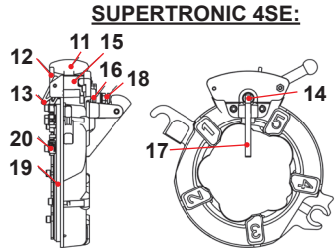
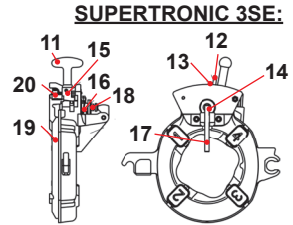
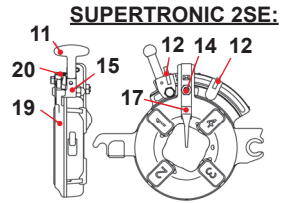
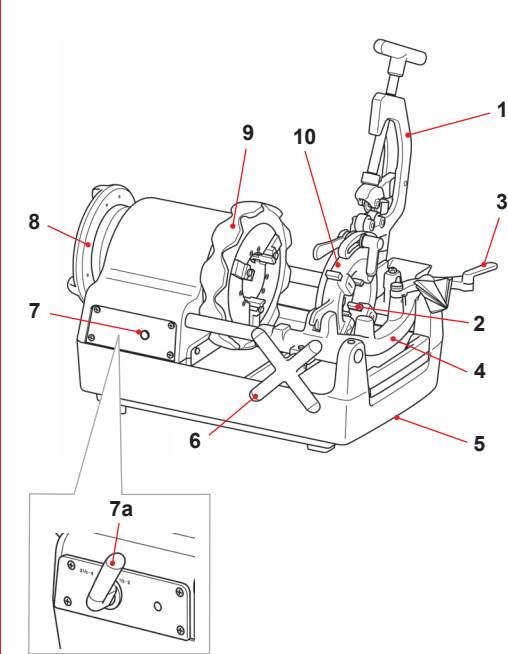
DE Bedienungsanleitung
EN Instructions for use
FR Instruction d'utilisation
ES Instrucciones de uso
IT Istruzioni d'uso
NL Gebruiksaanwijzing
PT Instruções de serviço
DA Brugsanvisning
SV Bruksanvisning

NO Bruksanvisning
FI Käyttöohje
PL Instrukcja obsługi
CZ Návod k používání
TR Kullanım kılavuzu
HU Kezelési útmutató
HR Upute za uporabu
EL Οδηγίες χρήσεως
RU Инструкция по использованию

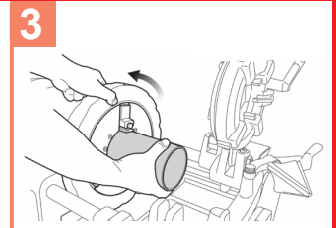
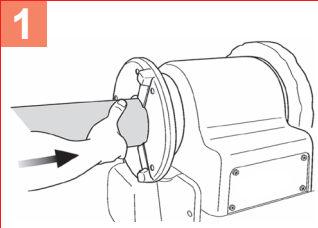


rothenberger.com

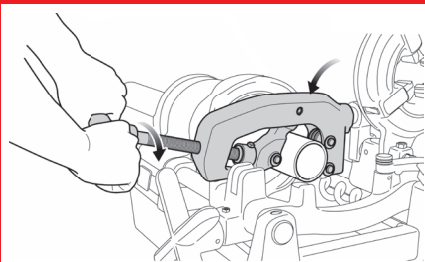
A Overview



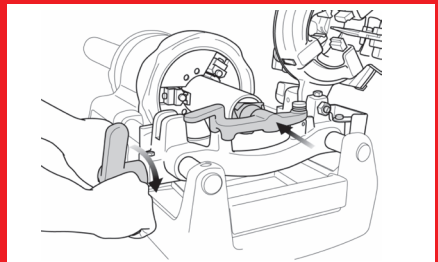
B Clamping



C Cutting



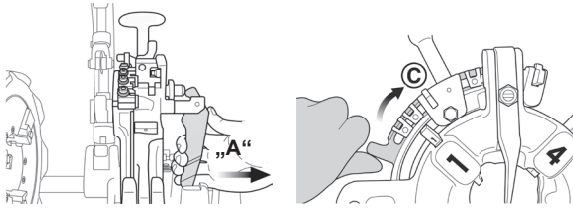
D Reaming



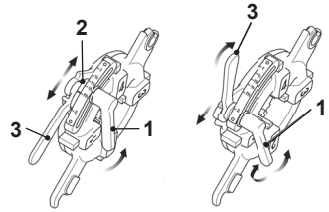
Remove and installing thread jaws

E

AUTOMATIC - DIE HEAD



STANDARD - DIE HEAD

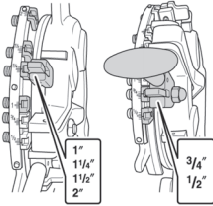


Changing thread size

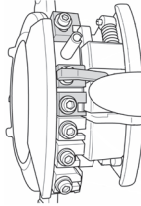
F

AUTOMATIC - DIE HEAD

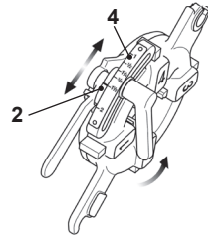
1/2" - 2"



2 1/2" - 4"



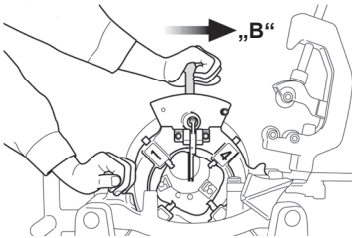
STANDARD - DIE HEAD



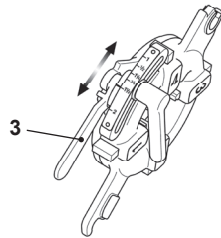
Threading

G

AUTOMATIC - DIE HEAD



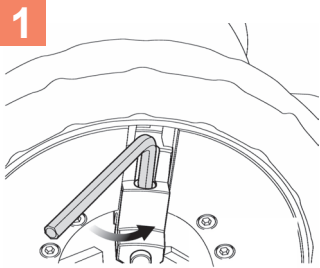
STANDARD - DIE HEAD



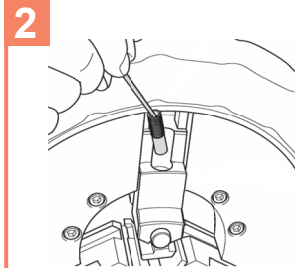
Changing clamping jaws

H

1



2



3

